

# KOMATSU®

## PC2000-8

### HORSEPOWER

Gross: 728 kW 976 HP / 1800 min<sup>-1</sup>

Net: 713 kW 956 HP / 1800 min<sup>-1</sup>

### OPERATING WEIGHT

Backhoe: 200000–204120 kg

440,920–450,000 lb

Loading shovel: 195000 kg

429,900 lb

**PC**  
**2000**

HYDRAULIC EXCAVATOR



Photo may include optional equipment.

# WALK-AROUND

## *Productivity and Economy*

- ***Fuel Efficient Machine Achieved by Total Power Management and Advanced Hydraulic System***  
***Fuel Consumption at Economy Mode 10% Reduced (compared with PC1800-6)***
  - Hydraulic power loss reduced with advanced hydraulic system
  - On-demand fan speed and engine output control system
  - Equipped with electronically controlled variable speed fans
- ***Powerful and Economical Engine***  
***Komatsu SAA12V140E-3 Engine with an Output of 713 kW (956 HP)***  
***Controlled by Efficient Power Management System***
  - Auto-deceleration and auto-idling system
  - Two work modes; Power and Economy

## *Ecology*

- ***U.S. EPA Tier 2 Emission Certified Komatsu Engine***
- ***New Technology Produces Remarkably Low Environmental Noise***  
***Dynamic Noise 8 dB lower than PC1800-6***
  - Power module packaging and noise absorbing blades trap noise inside
  - 3-D hybrid fan minimizes air turbulence noise

See pages 4 and 5.

## *Easy Repair and Maintenance*

### ***Low R&M Cost Sustained by Simplified and Reliable System with Long Service Life***

- ***Simplified and Durable Structure***
  - Single engine and Power Take Off (PTO) drive two Komatsu HPV375+375 pumps
  - Simplified travel unit with single motor (each side)
  - Reinforced track components
  - Long life oil and filters
  - Extended life of rubber components achieved by lowering hydraulic oil temperature
- ***Power Module Makes Installation and Removal of Components Easier, and Reduces Overhaul Hours and Cost***
- ***Service Friendly Design***
  - Maintenance deck surrounding the power module
  - Drain ports accessible from the ground level
  - Concentration of filters
  - Large fuel tank enables 24 hours continuous machine operation
  - Auto-greasing system including bucket pins with **200 L**  
52.8 U.S.gal grease tank
- ***KOMTRAX Plus Monitors the Machine Condition and Minimizes Machine Down Time***

See pages 6, 7, 8 and 9.



**HORSEPOWER**Gross: 728 kW 976 HP / 1800 min<sup>-1</sup>Net: 713 kW 956 HP / 1800 min<sup>-1</sup>**OPERATING WEIGHT****Backhoe****200000 – 204120 kg**

440,920 – 450,000 lb

**Loading shovel****195000 kg**

429,900 lb

***Operator Comfort*****• *Newly Designed Mining Shovel Cab Provides Comfortable Operation***

- Excellent operational visibility with extended front windshield and large twin wiper
- Extremely low noise and vibration

Dynamic in-cab noise reduced to the same level as passenger cars

- Rugged OPG top guard level 2 (ISO 10262) integrated into the cab
- Easy-to-see and easy-to-use 7-inch Liquid Crystal Display (LCD) large monitor
- Comfortable air-suspension seat
- Automatic air conditioner
- Highly pressurized cab

**• *Bulkhead between Pump Room and Engine*****• *Emergency Stop Devices*****• *Interconnected Horn and Flashing Light***

See pages 10, 11, 12 and 13.



Photo may include optional equipment.



# PRODUCTIVITY, ECONOMY & ECOLOGY

*In complete pursuit of total cost reduction and eco-friendliness  
Evolutionary Komatsu technologies*

### Komatsu Technology

Komatsu develops and produces all major components, such as engines, electronics and hydraulic components, in house. With this "Komatsu Technology" and adding customer feedback, Komatsu is achieving great advancements in technology. To achieve both high levels of productivity and economical performance, Komatsu has developed the main components with a total control system. The result is a new generation of high performance and economical excavators.

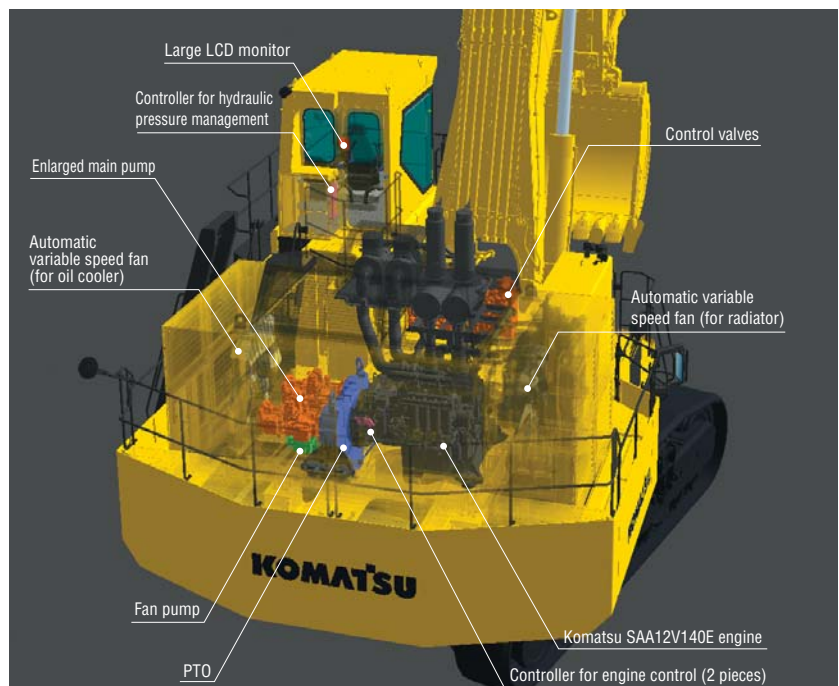
### Powerful and Fuel Efficient Machine Achieved by Total Power Management

PC2000-8 is equipped with the new Komatsu SAA12V140E engine that features clean, fuel efficient and powerful performance. Power losses in hydraulic system, cooling fan and PTO are reduced. Total Power Management using On-demand Power Control System succeeds in drastically reducing the fuel consumption per hour. The machine has enhanced functions that contribute to energy-saving operation including adjustable 'E mode' and 'ECO gauge'. PC2000-8 is a new generation clean and economical machine.

### Fuel consumption at E mode **10% reduced**

Compared with the PC1800-6 at DH mode and 100% working efficiency.

( Fuel consumption varies depending on job )  
conditions.



### ON-DEMAND POWER OPERATION SYSTEM

#### On-demand fan speed and engine output control system

Controls the rotational speed of the fan according to the hydraulic oil and coolant temperature, and varies the engine output depending on the fan speed.

#### On-demand power control system

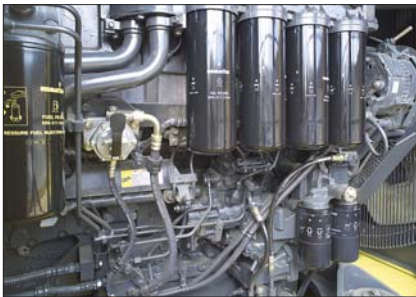
Controls pump absorbing horsepower and engine output automatically according to the job.

#### All-out power delivery system

Outputs all-out engine power when the heavy lift mode and travel is selected.

### High Power Komatsu Engine 713 kW (956 HP)

Equipped with the high efficiency turbocharger with large air-to-air aftercooler, the engine delivers high output of 713 kW (956 HP). The ample engine power enables an increase in work efficiency. This engine is U.S. EPA Tier 2 emission certified.



### Heavy Lift Mode

Turning the heavy lift mode switch on activates the all-out power delivery system to increase the lifting force of the boom. This mode is beneficial when handling rock and during heavy lifting applications.



### Selectable Working Modes

Two established work modes are further improved. You can select Power or Economy modes using a one-touch operation on the monitor panel depending on workloads. Two E mode settings available, enabling the operator to select optimum mode that delivers the best combination of production and fuel efficiency considering working conditions.



Working mode selection switch

### Advanced Environmentally Friendly Features

#### ECO gauge

The ECO gauge is provided on the right side of the monitor screen for energy saving operation. The gauge informs the operator of cumulative achievement to a predetermined fuel consumption target. By keeping the gauge indication within the green range, the operator can perform fuel-efficient operation to meet the target value.



ECO gauge

#### Idling caution

To prevent unnecessary fuel consumption, an idling caution is displayed on the monitor when the engine idles for 5 minutes or more.

#### Auto deceleration and auto idling system

The machine is equipped with the auto deceleration system (1400 min<sup>-1</sup>), reducing operating noise as well as fuel consumption. The auto idling system enables the engine idling speed to be set at a lower speed.

#### Power module packaging for ultra low-noise operation

Noise sources such as the engine, cooling fan, and hydraulic pumps are packaged in the machinery house. Large sound absorbing blades attached on the air intake and exhaust outlet block noise transmission. Combined with the three dimensions hybrid cooling fan, the machine realizes environmentally-friendly operation with amazingly low-noise.



# EASY REPAIR & MAINTENANCE

*Designed and built for total cost reduction  
The evolution of reliability and durability*

## Reduced Inspection/maintenance and Overhaul Man-hours Achieves Total Cost Reduction

### Power module packaging for easy installation and removal of components

Engine, radiator, oil cooler, hydraulic pumps and PTO are packaged within the Power module. This design facilitates installation and removal of components, contributing to the reduction of maintenance transportation and overhaul hours.

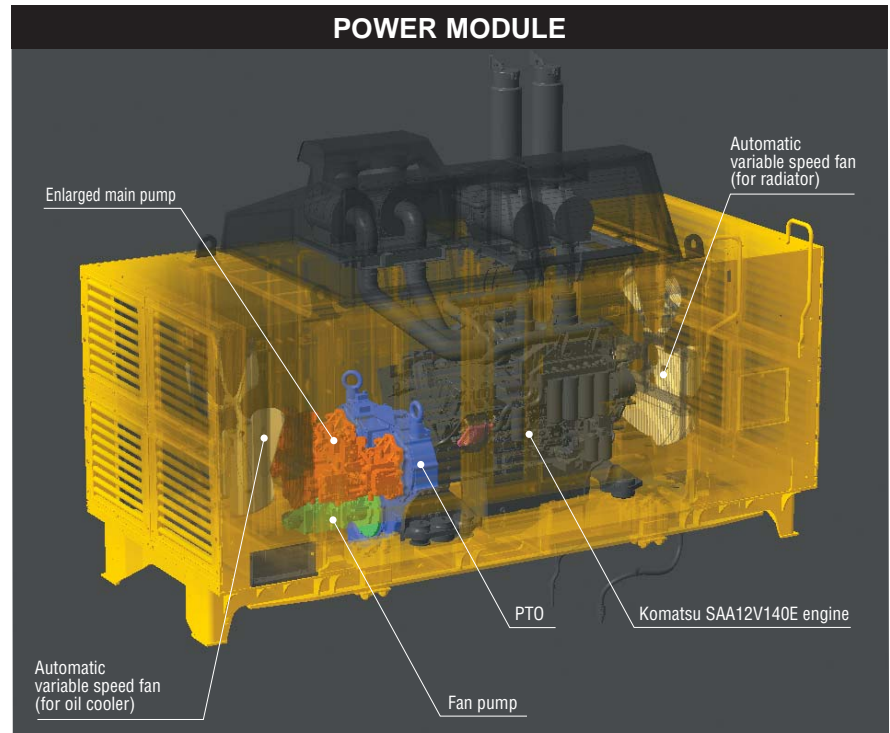


## Repair & maintenance cost Drastically reduced

Compared with current model

### Simple construction and enlarged components reduce the number of parts

Use of a single-engine, enlarged hydraulic pumps and simplified hydraulic circuit enables reduced hours required for checking and maintenance. Moreover, significant reduction of number of parts contributes to reduction of overhaul man-hours, resulting in total cost reduction.

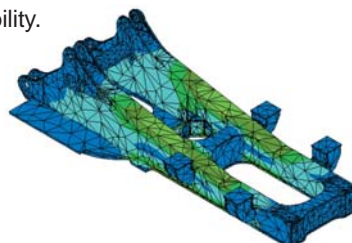


### High cooling efficiency machine design

Increased oil cooler capacity lowers the heat balance temperature of hydraulic oil to realize a cooler operating machine. Heat-resistant rubber seals are used in hydraulic pumps and cylinders to significantly increase component durability. These improvements dramatically extend the service life of the hydraulic system.

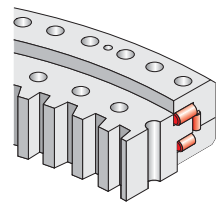
### Strengthened Frame Structure

Revolving frame, center frame and crawler frame are strengthened completely. The frames endure heavy-duty work and exhibit excellent durability.



### Durable Swing Circle with Triple-roller Bearing

Large capacity triple-roller bearing is used for the swing circle. The swing circle endures heavy-duty excavating and loading work, and exhibits excellent durability.



### Sturdy Guard and Large Track Link

Travel motors are shielded by sturdy guards. They prevent the motors from being damaged by the thrust of rocks. Enlarged track rollers, in combination with the largest size track links, provide excellent durability.



### Heavy-duty Rock Bucket (optional)

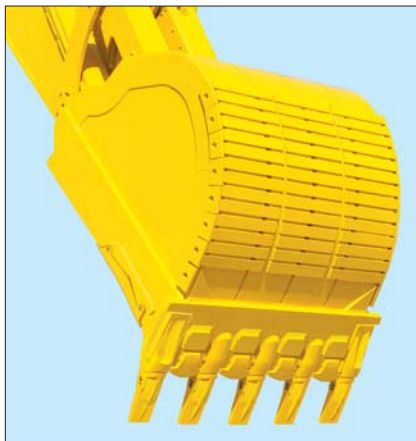
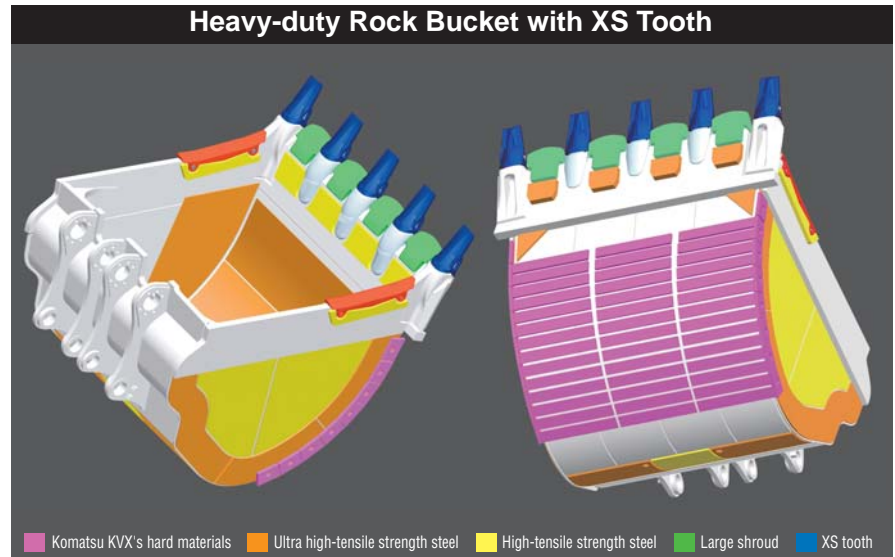
Packaged wear-resistant reinforcement plates are available. The repair cost of the bucket can be considerably reduced with the new design.

\* KOMATSU KVVX's hard materials :

Komatsu developed, wear-resistant, reinforced materials. Brinell hardness: 500 or more (180kg/mm<sup>2</sup> class). Features high wear-resistance and less heat-induced alteration during rock digging, maintaining long term hardness.

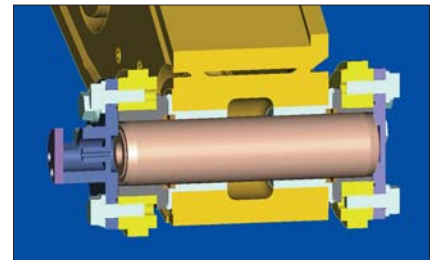
### XS Tooth

- Unique bucket tooth shape, superior digging performance
- Long-term high sharpness
- Great penetration performance
- Hammerless, safe, and easy tooth replacement  
(Tooth replacement time: Half the conventional machine.)



### Wear-resistant Float Pin

Boom top pin and arm top pin are floating type. Since the pin can freely rotate, it receives less friction load and exhibits excellent reliability and durability.



### Arm Rock Protector Guards the Arm Against Impact

Arm rock protector is equipped as standard. The protector guards the arm greasing piping against impact.





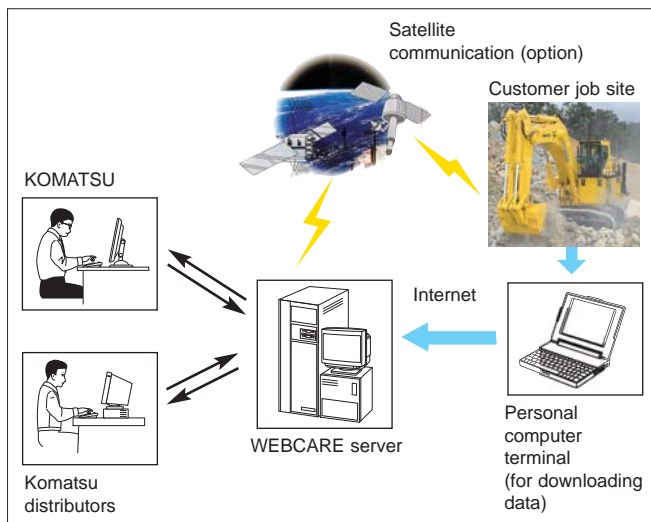
# EASY REPAIR & MAINTENANCE

*Sustained high level performance*

*An achievement in the evolution of maintenance*

## KOMTRAX Plus

KOMTRAX Plus controller monitors the health conditions of major components and enables remote analysis of the machine and its operation. This process is supported by the Komatsu distributors, factory and design team. This contributes to reduced repair costs and to maintaining maximum availability.



## Monitor function

Controller monitors engine oil level, coolant temperature, battery charge and air clogging, etc. If controller senses any abnormality, it is displayed on the LCD.



## Maintenance function

Monitor indicates replacement time of oil and filters on LCD when the replacement interval is reached.

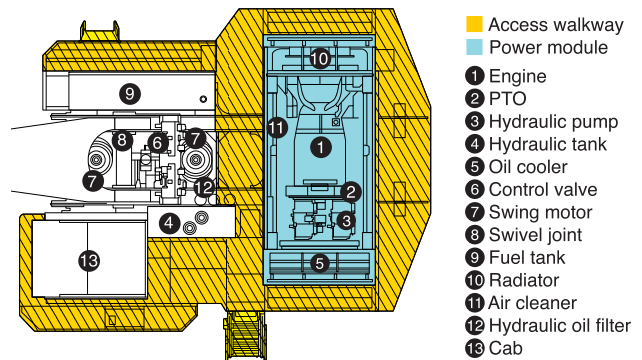


## Trouble data memory function

Monitor stores abnormalities for effective troubleshooting.

## Advanced Layout for Easy Checking and Maintenance

Catwalk surrounding the power module and center walkway provides easy access to the inspection and maintenance points.

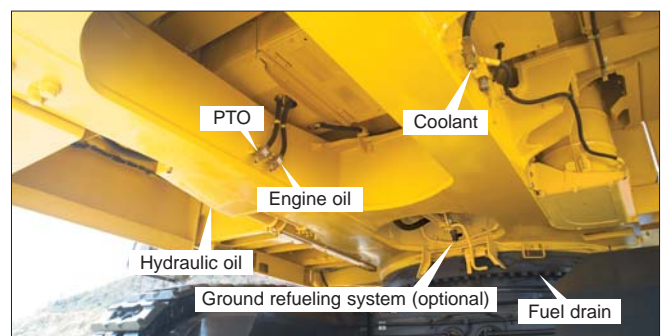


## Centralized Filters

Centralized filters contribute to easy maintenance.

## Remote Drain Piping Enables Drainage from the Ground

Remote drain piping provided to drain hydraulic oil, PTO oil, engine oil and coolant enable performing drainage work from the ground.



## Ground Refueling System (optional)

Remote refueling port enables ground level refueling.



## Large Fuel Tank

3400 L 898 U.S. gal large fuel tank enables continuous operation for 24 hours.

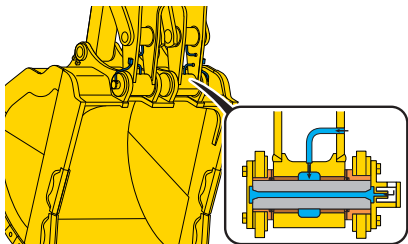


**Service Center (optional)**

Collective arrangement of drain and filler ports for fuel, oil, grease and coolant on the service center, which is hydraulically moved up and down, makes possible quick servicing from the ground.

**Automatic Greasing System**

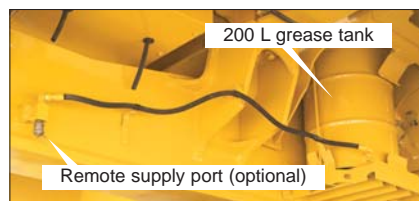
Greasing work equipment and bucket is fully automated. Since the system carries out automatic greasing at regular time intervals, greasing is hassle-free.

**Jump Start Receptacle (optional)**

Jump start receptacle allows starting engine from external power source.

**Large Capacity Grease Tank and Easy-to-supply Refill Piping (optional)**

The machine is equipped with **200 L** 52.8 U.S.gal large capacity grease tank enough to perform 24 hours operation. An optional remote refill part enables grease supply to the tank from the ground.

**Dust Indicator with Five-step Indication**

Informs of air cleaner clogging in five steps to warn of filter condition.

**Battery Isolator and Starting Motor Isolator (optional)**

When inspection and maintenance or storing the machine long term, the isolators serve to isolate both positive and negative terminals of the battery and starting motor.

**Easy Cleaning of Radiator**

The hydraulically driven fan can be reversed to facilitate cleaning of the cooling unit. In addition, this feature contributes to reducing warm-up time in low temperatures.

**Fuel Pre-filter (with Water Separator)**

Removes water and contaminants from fuel to enhance the fuel system reliability.

**Reduced Maintenance Costs**

Hydraulic oil filter replacement is extended from 500 to 1000 hours.

Fuel filter replacement interval is extended from 500 to 1000 hours.



Hydraulic filter



Photo may include optional equipment.

# COMFORT / WORKING ENVIRONMENT

*Operator first concept in every corner of the machine  
An achievement in the evolution of operator performance*



## Excellent Operational Visibility

Downward visibility is drastically improved by extending the front windshield. This facilitates the operator view of machine footing. New interior arrangement eliminates blind spots in work equipment side and provides clear and wide range surrounding visibility in combination with wide glass windows.

## New Operator Cab Specially Designed for Mining

New operator cab provides a comfortable working environment. Sturdy cab of solid construction, with top guard conforms to OPG level 2 (ISO 10262).

**OPG top guard level 2 (ISO 10262) integrated into the cab**



## Step Light with Timer and Maintenance Light

Step light with timer provides light for 90 seconds to allow the operator to get off the machine.



## Hammer for Emergency Escape and Fire Extinguisher

To prepare for emergencies, a hammer for emergency escape is provided at the front of the cab and a fire extinguisher at the rear.

## Hydraulic-actuated Ladder

The machine is equipped with a hydraulic-actuated ladder that can be set up and folded easily for safe getting on and off.





### Emergency Stop Device & Fuel Cut-off Lever

Emergency stop device is provided at two points on the power module as standard equipment. Engine start lock function of the device for use during maintenance work. In addition, fuel cut-off lever provided on the revolving frame allows stopping the engine from the ground.



Emergency stop switch  
(with engine start lock function)



Fuel cut-off lever

Engine emergency stop switch is additionally installed to the console in the cab as standard. The remote emergency stop switch operated from the ground is available as an option.



### Interconnected Horn and Flashing Light

Allows the operator to give visual and audible notice to the dump truck operator.



### Bulkhead Wall (Fire Wall)

Prevents oil from splashing into the engine room even if hydraulic hoses are broken.



### Stepladder for Emergency Escape

In case of an emergency, the stepladder allows you to get out of the machine.



### LED Working Light (optional)

LED working light with double the luminance of conventional halogen lamp is available for night work.



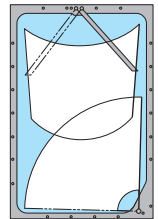
### Dual Rearview Mirror

Mirrors offer high visibility with fewer blind spots in left rear field of vision.



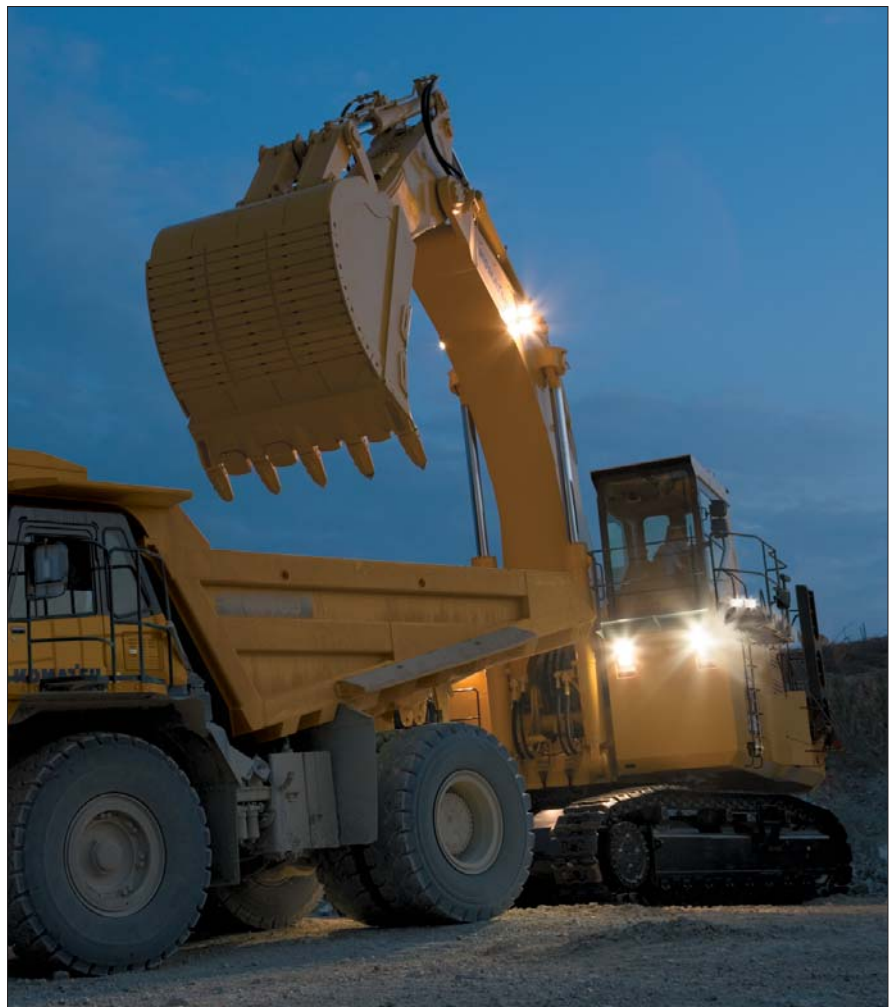
### Large Twin Wiper

Large twin wiper covers windshield area and provides excellent front visibility even in the rain.



### Wide Catwalk with Handrail

The machine is equipped with kickboard (100 mm 3.9" height) and large handrail all around.



# COMFORT / WORKING ENVIRONMENT

*Equipment designed to minimize operator fatigue  
An achievement in the evolution of comfort performance*



## Spacious and Comfortable New Cab Design

Large cab designed for exclusive use in mining shovels provides enough space to relax during operation. The cab with improved air tightness is pressurized to prevent dust from entering. Combined with a large capacity twin air conditioner that cools and heats the cab effectively, ample and comfortable operating environment is realized.

**Cab volume**      **30% increased**

Compared with PC1800-6

## Comfortable Air Suspension Seat

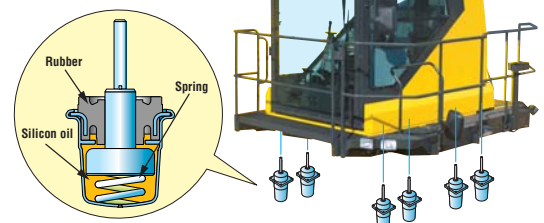
The seat with air suspension minimizes and softens vibrations transmitted to the operator. Depending on the operator's weight and physique, the cushion can be adjusted and the seat can slide fore/aft and vertically.

## Comfortable Operating Environment with Same Level of Low Noise as Passenger Cars

Integral structure of cab and new damper mounts, in combination with power module packaging, attain outstanding low noise and vibration in the cab equivalent to passenger cars.

**Noise level**      **64.5 dB(A)**

In the cab on max. engine speed  
under no-load condition





### Easy-to-see and Easy-to-use 7-inch LCD Large Monitor

The machine is equipped with 7-inch LCD large monitor for secure, and smooth operation. Panel visibility is significantly improved by the use of the high-resolution LCD panel. The panel switch group is easy-to-use, enabling switch over of engine output and increase of lifting force during operation. Furthermore, use of function key enables the operator to perform multi-functions with ease. Character display can be selected among nine languages.



### Standard Equipment



**Air conditioner control panel**



**Trainer's seat diagonally behind the operator**



**Sun shield**



**Defroster**



**Floor mat**



**Room light**



**AM/FM radio/bottle holder/cigarette lighter**



**Ashtray**



**Utility space/lunchbox**

# SPECIFICATIONS



## ENGINE

Model ..... Komatsu SAA12V140E-3  
 Type ..... 4-cycle, water-cooled, direct injection  
 Aspiration ..... Turbocharged, aftercooled  
 Number of cylinders ..... 12  
 Bore ..... **140 mm** 5.51"  
 Stroke ..... **165 mm** 6.50"  
 Piston displacement ..... **30.48 L** 1860 in<sup>3</sup>  
 Governor ..... All-speed, electronic  
 Horsepower:  
     SAE J1995 ..... Gross **728 kW** 976 HP  
     ISO 9249 / SAE J1349\* ..... Net **713 kW** 956 HP  
 Rated rpm ..... 1800 min<sup>-1</sup>  
 Fan drive type ..... Hydraulic  
 \*Net horsepower at the maximum speed of radiator cooling fan is **679 kW** 910HP.  
 U.S. EPA Tier 2 emission certified



## HYDRAULIC SYSTEM

Type ..... Open-center load sensing system  
 Number of selectable working modes ..... 2  
 Main pump:  
     Type ..... Variable displacement piston pumps  
     Pumps for ..... Boom, arm, bucket, swing and travel circuits  
 Maximum flow:  
     For attachment, swing and travel .. **2317 L/min** 612.2 U.S. gpm  
     For fan drive ..... **324 L/min** 85.6 U.S. gpm  
 Hydraulic motors:  
     Travel ..... 2 x axial piston motors with parking brake  
     Swing ..... 2 x axial piston motors with swing holding brake  
     Fan ..... 2 x axial piston motors  
 Relief valve setting:  
 Attachment circuits  
     Backhoe ..... **29.4 MPa** 300 kg/cm<sup>2</sup> 4,270 psi  
     Loading shovel ..... **29.4 MPa** 300 kg/cm<sup>2</sup> 4,270 psi  
     Travel circuit ..... **32.9 MPa** 335 kg/cm<sup>2</sup> 4,760 psi  
     Swing circuit ..... **29.4 MPa** 300 kg/cm<sup>2</sup> 4,270 psi  
     Pilot circuit ..... **2.9 MPa** 30 kg/cm<sup>2</sup> 430 psi

Hydraulic cylinders:  
 Number of cylinders—bore x stroke  
 Backhoe  
     Boom ..... **2 – 300 mm x 2647 mm** 11.8" x 104.2"  
     Arm ..... **2 – 250 mm x 2138 mm** 9.8" x 84.2"  
     Bucket ..... **2 – 200 mm x 2170 mm** 7.9" x 85.4"  
 Loading shovel  
     Boom ..... **2 – 280 mm x 1930 mm** 11.6" x 76.0"  
     Arm ..... **2 – 200 mm x 2170 mm** 7.9" x 85.4"  
     Bucket ..... **2 – 225 mm x 2050 mm** 8.9" x 80.7"  
     Bottom dump ..... **2 – 180 mm x 600 mm** 7.1" x 23.1"



## SWING SYSTEM

Swing gear ..... 2 x Planetary gear  
 Swing circle lubrication ..... Grease  
 Swing holding brakes ..... Mechanical disk brakes  
 Swing speed ..... 4.8 min<sup>-1</sup>



## DRIVE SYSTEM

Travel gear ..... Planetary gear  
 Gradeability ..... 65%  
 Maximum travel speed ..... **2.7 km/h** 1.7 mph  
 Parking brakes ..... Mechanical disk brakes



## UNDERCARRIAGE

Track adjuster ..... Grease  
 No. of shoes ..... 49 each side  
 No. of carrier rollers ..... 3 each side  
 No. of track rollers ..... 8 each side



## COOLANT AND LUBRICANT CAPACITY (REFILLING)

Fuel tank ..... **3400 L** 898.3 U.S. gal  
 Radiator ..... **180 L** 47.6 U.S. gal  
 Engine ..... **120 L** 31.7 U.S. gal  
 Travel gear, each side ..... **85 L** 22.5 U.S. gal  
 Swing drives ..... **30 x 2 L** 7.9 x 2 U.S. gal  
 Hydraulic tank ..... **1300 L** 343.5 U.S. gal  
 PTO ..... **30 L** 7.9 U.S. gal



## OPERATING WEIGHT (APPROXIMATE)

BACKHOE  
 Operating weight, including **8700 mm** 28'7" boom, **3900 mm** 12'10" arm, ISO 7451 heaped **12.0 m<sup>3</sup>** 15.7 yd<sup>3</sup> general purpose backhoe bucket, operator, lubricant, coolant, full fuel tank, and the standard equipment.

Shoes	PC2000-8	
	Operating Weight	Ground Pressure
Double grouser 810 mm 32"	<b>200000 kg</b> 440,920 lb	<b>190 kPa</b> 1.94 kg/cm <sup>2</sup> 27.6 psi
Triple grouser 1010 mm 40"	<b>204120 kg</b> 450,000 lb	<b>156 kPa</b> 1.59 kg/cm <sup>2</sup> 22.6 psi

LOADING SHOVEL  
 Operating weight, including **5950 mm** 19'6" boom, **4450 mm** 14'7" arm, **11.0 m<sup>3</sup>** 14.4 yd<sup>3</sup> heaped bucket, operator, lubricants, coolant, full fuel tank and standard equipment.

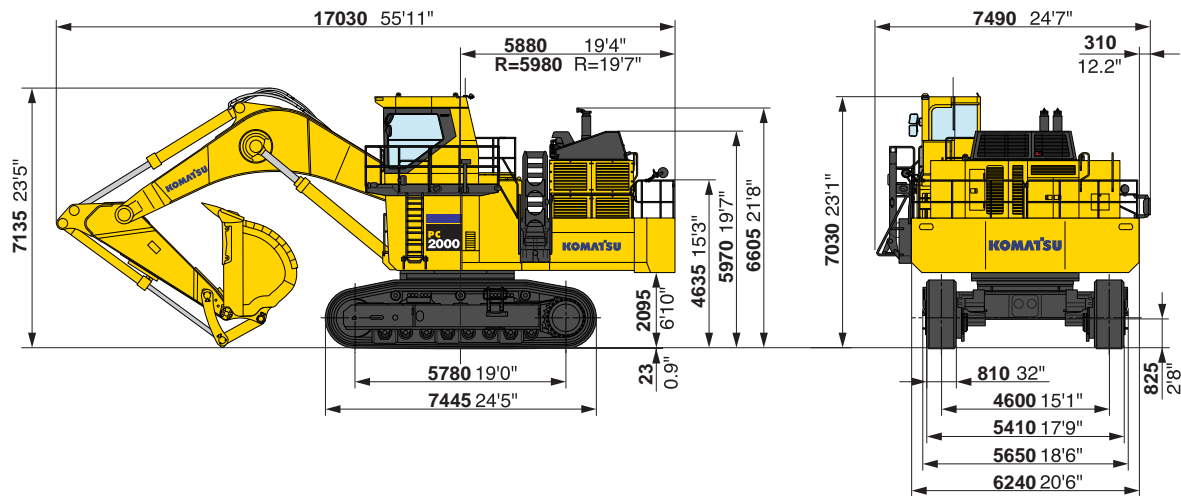
Shoes	PC2000-8	
	Operating Weight	Ground Pressure
Double grouser 810 mm 32"	<b>195000 kg</b> 429,900 lb	<b>186 kPa</b> 1.90 kg/cm <sup>2</sup> 27.0 psi



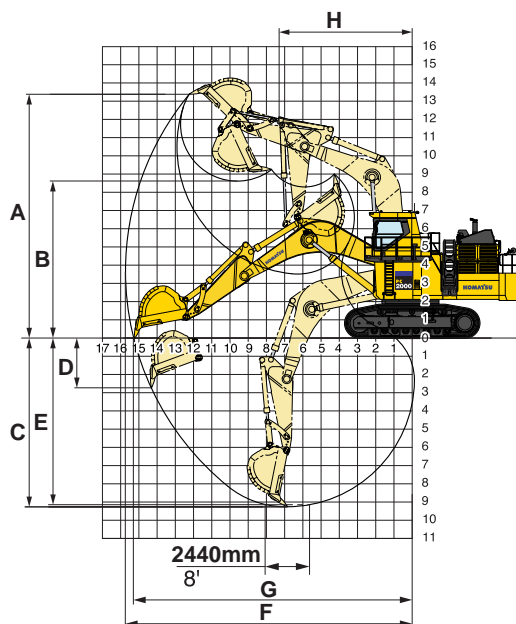


## BACKHOE DIMENSIONS

Unit: mm ft in



## BACKHOE WORKING RANGE



Boom length	8.7 m 28'7"
Arm length	3.9 m 12'10"
A Max. digging height	13410 mm 44'0"
B Max. dumping height	8650 mm 28'5"
C Max. digging depth	9235 mm 30'4"
D Max. vertical wall digging depth	2710 mm 8'11"
E Max. digging depth of cut for 8' level	9115 mm 29'11"
F Max. digging reach	15780 mm 51'9"
G Max. digging reach at ground level	15305 mm 50'3"
H Min. swing radius	7500 mm 24'7"
Bucket digging force (SAE J 1179)	626 kN 63800 kg / 140,650 lb
Arm crowd force (SAE J 1179)	574 kN 58500 kg / 128,970 lb
Bucket digging force (ISO 6015)	697 kN 71100 kg / 156,750 lb
Arm crowd force (ISO 6015)	586 kN 59800 kg / 131,840 lb



## BACKHOE BUCKET

BUCKET CAPACITY (HEAPED)		WIDTH		WEIGHT (with Side Shrouds) kg lb	MAX MATERIAL DENSITY (Loose) t / m³ lb / yd³	RECOMMENDED USES	TOOTH SYSTEM
ISO 7451, PCSA m³ yd³	CECE m³ yd³	Without Side Shrouds mm in	With Side Shrouds mm in				
*12.0 15.7	11.0 14.4	2600 102"	2670 105"	12340 27,210	1.8 3000	Rock	XS145
12.0 15.7	11.0 14.4	2600 102"	2670 105"	9700 21,380	1.8 3000	General purpose	XS145
*13.7 17.9	12.0 15.7	2720 107"	2790 110"	12510 27,590	1.5 2500	Rock	XS145
13.7 17.9	12.0 15.7	2720 107"	2790 110"	10500 23,150	1.5 2500	General purpose	XS145

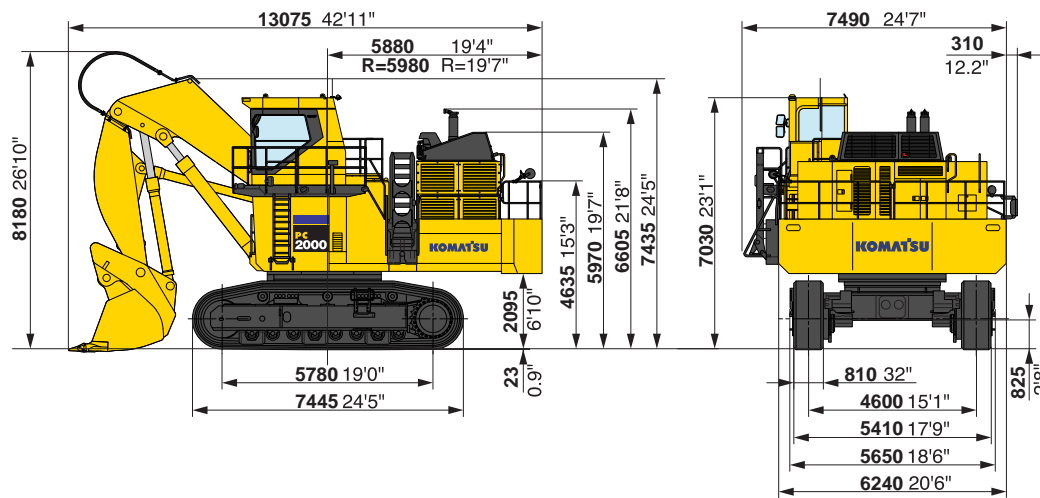
These charts are based on over-side stability with fully loaded bucket at maximum reach.

\*: Wear-resistant bucket

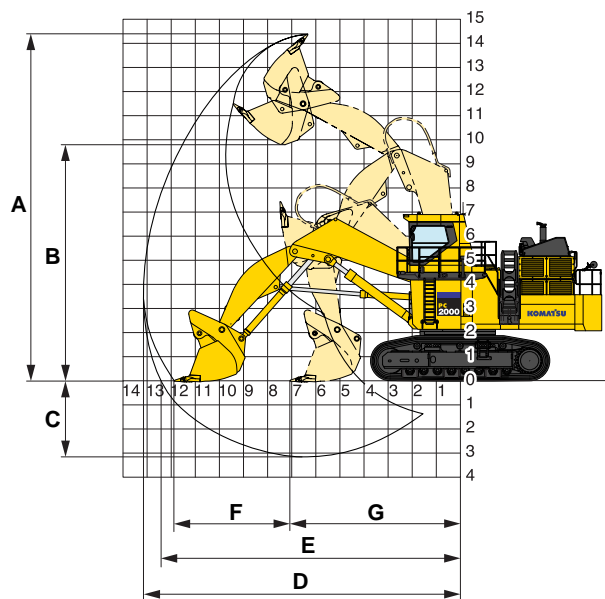


## LOADING SHOVEL DIMENSIONS

Unit: mm ft in



## LOADING SHOVEL WORKING RANGE



### Working Range

Type of bucket	Bottom dump
Capacity-heaped	11.0 m <sup>3</sup> 14.4 yd <sup>3</sup>
A Max. cutting height	14450 mm 47'5"
B Max. dumping height	9665 mm 31'9"
C Max. digging depth	3190 mm 10'6"
D Max. digging reach	13170 mm 43'3"
E Max. digging reach at ground level	11940 mm 39'2"
F Level crowding distance	4850 mm 15'11"
G Min. crowd distance	7090 mm 23'3"
Bucket digging force	721 kN 73500 kg / 162,040 lb
Arm crowd force	755 kN 77000 kg / 169,750 lb



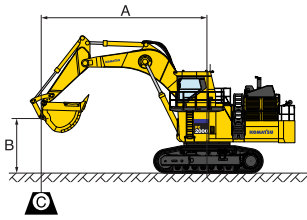
## LOADING SHOVEL BUCKET

Type of bucket	Bottom dump
Capacity-heaped	11.0 m <sup>3</sup> 14.4 yd <sup>3</sup>
Width (with side shrouds)	3220 mm 127"
Weight	14400 kg 31,750 lb
Tooth system	XS145
No. of bucket teeth	6
Max. material density	1.8 t / m <sup>3</sup> 3000 lb / yd <sup>3</sup>





## LIFTING CAPACITY



### PC2000-8

Equipment:

- Boom: 8.7 m 28'7"
- Arm: 3.9 m 12'10"
- Bucket: 12.0 m³ 15.7 yd³
- Bucket weight: 9700 kg 21,380 lb
- Track shoe width: 810 mm 32"

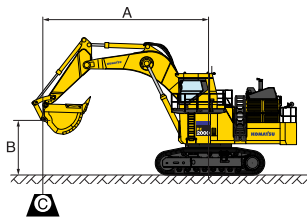
- A: Reach from swing center  
B: Bucket hook height  
C: Lifting capacity  
Cf: Rating over front  
Cs: Rating over side  
⊗: Rating at maximum reach

#### Heavy Lift Off

Unit: kg lb

A B	⊗ Maximum		10.7 m 35'		9.1 m 30'		7.6 m 25'		6.1 m 20'		4.6 m 15'		3.0 m 10'	
	Cf	Cs	Cf	Cs	Cf	Cs	Cf	Cs	Cf	Cs	Cf	Cs	Cf	Cs
7.6 m 25'	*21050 *46,400	*21050 *46,400	*31450 *69,300	*31450 *69,300										
6.1 m 20'	*21950 *48,400	*21950 *48,400	*33350 *73,500	*33350 *73,500	*38650 *85,200	*38650 *85,200	*46700 *102,900	*46700 *102,900						
4.6 m 15'	*23400 *51,500	*23400 *51,500	*35400 *78,000	*35400 *78,000	*42000 *92,500	*42000 *92,500	*52200 *115,000	*52200 *115,000						
3.0 m 10'	*25500 *56,100	24100 53,100	*37150 *81,900	36050 79,400	*44850 *98,800	*44850 *98,800	*56550 *124,700	*56550 *124,700						
1.5 m 5'	*28450 *62,700	24150 53,200	*38300 *84,400	34650 76,300	*46650 *102,900	44900 99,000	*59050 *130,100	*59050 *130,100	*61150 *134,800	*61150 *134,800				
0 m 0'	*29800 *65,700	25050 55,200	*38500 *84,800	33600 74,100	*47150 *103,900	43450 95,800	*59400 *130,900	58650 129,300	*68850 *151,800	*68850 *151,800				
-1.5 m -5'	*30250 *66,600	27000 59,500	*37200 *82,000	33100 73,000	*45950 *101,300	42750 94,200	*57550 *126,800	*57550 *126,800	*73500 *162,000	*73500 *162,000	*48800 *107,500	*48800 *107,500	*33650 *74,200	*33650 *74,200
-3.0 m -10'	*30350 *66,900	*30350 *66,900	*33700 *74,300	33200 73,200	*42650 *94,000	*42650 *94,000	*53300 *117,400	*53300 *117,400	*67000 *147,700	*67000 *147,700	*68250 *150,400	*68250 *150,400	*50150 *110,600	*50150 *110,600
-4.6 m -15'	*29750 *65,500	*29750 *65,500			*36050 *79,400	*36050 *79,400	*45850 *101,100	*45850 *101,100	*57200 *126,000	*57200 *126,000	*70850 *156,200	*70850 *156,200	*69500 *153,200	*69500 *153,200
-6.1 m -20'	*27000 *59,500	*27000 *59,500					*33150 *73,100	*33150 *73,100	*42200 *93,000	*42200 *93,000	*50800 *111,900	*50800 *111,900		

\* Load is limited by hydraulic capacity rather than tipping. Ratings are based on SAE standard No. J/ISO10567. Rated loads do not exceed 87% of hydraulic lift capacity or 75% of tipping load.



### PC2000-8

Equipment:

- Boom: 8.7 m 28'7"
- Arm: 3.9 m 12'10"
- Bucket: 12.0 m³ 15.7 yd³
- Bucket weight: 9700 kg 21,380 lb
- Track shoe width: 810 mm 32"

- A: Reach from swing center  
B: Bucket hook height  
C: Lifting capacity  
Cf: Rating over front  
Cs: Rating over side  
⊗: Rating at maximum reach

#### Heavy Lift On

Unit: kg lb

A B	⊗ Maximum		10.7 m 35'		9.1 m 30'		7.6 m 25'		6.1 m 20'		4.6 m 15'		3.0 m 10'	
	Cf	Cs	Cf	Cs	Cf	Cs	Cf	Cs	Cf	Cs	Cf	Cs	Cf	Cs
7.6 m 25'	*23900 *52,700	*23900 *52,700	*36150 *79,600	*36150 *79,600										
6.1 m 20'	*24850 *54,800	*24850 *54,800	*38350 *84,500	*38350 *84,500	*44150 *97,300	*44150 *97,300	*52950 *116,700	*52950 *116,700						
4.6 m 15'	*26450 *58,200	24800 54,700	*40700 *89,700	37700 83,100	*48000 *105,800	*48000 *105,800	*59350 *130,800	*59350 *130,800						
3.0 m 10'	*28700 *63,200	24100 53,100	*42800 *94,300	36050 79,400	*51300 *113,100	47050 103,700	*64450 *142,000	63650 140,300						
1.5 m 5'	*31950 *70,400	24150 53,200	*44150 *97,300	34650 76,300	*53500 *117,900	44900 99,000	*67350 *148,500	60500 133,400	*62850 *138,600	*62850 *138,600				
0 m 0'	*34100 *75,200	25050 55,200	*44400 *97,900	33600 74,100	*54150 *119,400	43450 95,800	*67900 *149,600	58650 129,300	*62450 *137,600	*62450 *137,600				
-1.5 m -5'	*35300 *77,800	27000 59,500	*43100 *95,000	33100 73,000	*52900 *116,600	42750 94,200	*65950 *145,300	57850 127,500	*62950 *138,800	*62950 *138,800	*54150 *119,300	*54150 *119,300	*37650 *83,000	*37650 *83,000
-3.0 m -10'	*35550 *78,300	30600 67,400	*39250 *86,500	33200 73,200	*49300 *108,600	42700 94,100	*61300 *135,100	57500 127,800	*64650 *142,500	*64650 *142,500	*61500 *135,600	*61500 *135,600	*55650 *122,700	*55650 *122,700
-4.6 m -15'	*34950 *77,000	*34950 *77,000			*42000 *92,600	*42000 *92,600	*53100 *117,100	*53100 *117,100	*66000 *145,500	*66000 *145,500	*62200 *137,100	*62200 *137,100	*62000 *136,600	*62000 *136,600
-6.1 m -20'	*32150 *70,800	*32150 *70,800					*39150 *86,200	*39150 *86,200	*49500 *109,100	*49500 *109,100	*59650 *131,500	*59650 *131,500		

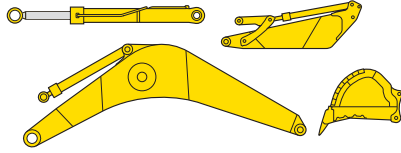
\* Load is limited by hydraulic capacity rather than tipping. Ratings are based on SAE standard No. J/ISO10567. Rated loads do not exceed 87% of hydraulic lift capacity or 75% of tipping load.

Specifications shown include the following equipment:

**Backhoe:** boom **8700 mm** 28'7", arm **3900 mm** 12'10", bucket **12.0 m<sup>3</sup>** 15.7 yd<sup>3</sup>, shoes **810 mm** 32" double grouser

**Loading Shovel:** boom **5950 mm** 19'6", arm **4450 mm** 14'7", bucket **11.0 m<sup>3</sup>** 14.4 yd<sup>3</sup>, shoes **810 mm** 32" double grouser

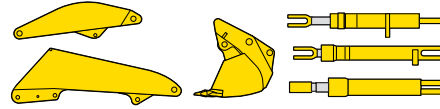
#### Work equipment assembly-backhoe



	Length mm ft in	Width mm ft in	Height mm ft in	Weight t U.S. t
Boom	9170 30'1"	2065 6'9"	3195 10'6"	20.9 23.0
Arm	5495 18'0"	1605 5'3"	2055 6'9"	12.9 14.2
Bucket	3540 11'7"	2790 9'2"	2320 7'7"	9.7 10.7

	Length mm ft in	Weight t U.S. ton	Quantity
Boom cylinder	4265 14'0"	2.4 2.7	2

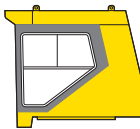
#### Work equipment assembly-Loading Shovel



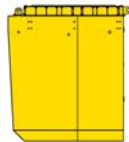
	Length mm ft in	Width mm ft in	Height mm ft in	Weight t U.S. t
Boom	6400 21'0"	1740 5'9"	2000 6'7"	11.8 13.0
Arm	4900 16'1"	1450 4'9"	1700 5'7"	9.5 10.5
Bucket	3500 11'6"	3190 10'6"	2920 9'7"	14.4 15.9

	Length mm ft in	Weight t U.S. ton	Quantity
Boom cylinder	4265 14'0"	1.90 2.09	2
Arm cylinder	3370 11'9"	1.05 1.16	2
Bucket cylinder	3350 11'0"	1.10 1.21	2

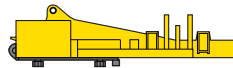
#### Cab



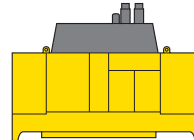
#### Cab base



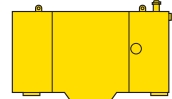
#### Revolving frame



#### Power module



#### Fuel tank

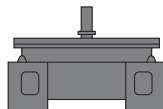


Length	mm ft.in	2885 9'6"	3660 12'0"	7575 24'10"	5215 17'1"	3100 10'2"
Width	mm ft.in	1880 6'2"	2505 8'3"	3180 10'5"	2455 8'1"	875 2'10"
Height	mm ft.in	2520 8'3"	2700 8'10"	2640 8'8"	3195 10'6"	2070 6'10"
Weight	t U.S. t	1.8 1.98	2.5 2.8	26.5 29.2	16.1 17.7	2.4 2.65

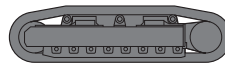
#### Counter weight



#### Center frame



#### Undercarriage



#### Hydraulic tank



Length	mm ft.in	6420 21'1"	3815 12'6"	7435 24'5"	1860 6'1"
Width	mm ft.in	1115 3'8"	3190 10'6"	1720 5'8"	1115 3'8"
Height	mm ft.in	1505 4'11"	2210 7'3"	1920 6'4"	2125 7'0"
Weight	t U.S. t	24.5 27.0	18.0 19.8	26.0 x 2 28.65 x 2	3.5 3.86

#### Others

Catwalk, step, handrail, small removed parts, etc.





## STANDARD EQUIPMENT

### ENGINE AND RELATED ITEMS:

- Air cleaner, double element dry (Inside mounted)
- Two cooling fans with fan guard (Hydraulic driven, for radiator and oil cooler)
- Engine, Komatsu SAA12V140E-3
- Fuel pre-filters with water separators

### ELECTRICAL SYSTEM:

- Alternators, 2 x 24 V/90 A
- Batteries, 4 x 12 V/140 Ah
- Starting motors, 2 x 11 kW
- Working lights, 4 on boom, 4 on cab base, 3 on fuel tank top front, 1 left front and 1 left under cab side catwalk
- Auto-decelerator and auto-idling system
- AM/FM radio
- Lighting switches on instrument panel

### UNDERCARRIAGE:

- **810 mm** 32" double grouser shoes
- 8 track rollers/3 carrier rollers (each side)
- Hydraulic idler cushion (HIC) with shock absorbing accumulator
- Track guiding guard (Separate type)

### GUARDS AND COVERS:

- Dustproof net for radiator and oil cooler
- Pump/engine room partition cover
- Power module under cover
- Travel motor guard

### OPERATOR'S CAB:

- Large damper mounted and pressurized mining shovel cab with large tinted windshield, lockable door, large twin wipers and washers, floor mats, cigarette lighter, ashtray and cup holders
- Instrument panel with electronic display/monitor system (7" LCD), electrically-controlled throttle dial, electric service meter, gauges (coolant temperature, hydraulic oil temp., fuel level, PTO oil temp., engine oil temp.), truck counters, ECO gauge
- Built-in top guard conforming to OPG level 2 (ISO 10262)
- Automatic air conditioners (A/C) (twin)
- Seat, fully adjustable air suspension with retractable seat belt
- Trainer's seat
- Sun shield
- Fire extinguisher
- Emergency engine stop switch
- Lock lever

### HYDRAULIC SYSTEM:

- Open-center load sensing system
- 4 variable displacement piston pumps (2 tandem pumps) for work equipment, travel and swing, 2 variable displacement piston pumps (1 tandem pump) for fan drive
- Two axial piston motors for swing with single stage relief valve
- One axial piston motor per track for travel with counterbalance valve
- Four control valves (two integrated valves) for work equipment, swing and travel
- Control levers for work equipment and swing with PPC system
- Control levers and pedals for travel with PPC system
- Oil cooler
- High-pressure in-line oil filters
- Drain-filters for pumps & motors
- Shockless boom control
- Two-mode pressure setting for boom

### DRIVE SYSTEM:

- Planetary travel gear with axial piston motor
- Travel parking brake

### OTHER STANDARD EQUIPMENT:

- Fully-automatic greasing system with **200 L** 52.8 U.S. gal.
- Manual grease gun for track adjuster
- Hydraulic-actuated ladder
- Step ladder for emergency escape
- Fuel tank, **3400 L** 898 U.S. gal.
- Automatic swing holding brake
- Emergency engine stop switch and fuel cut-off lever
- Maintenance light
- Step light with timer
- Light in machine cab
- Travel alarm
- Wide catwalk with kickboard (**100 mm** 3.9" height) and large handrail
- Interconnected horn and flashing light
- Dual rearview mirrors
- KOMTRAX Plus



## OPTIONAL EQUIPMENT

- Additional 6 fuses and terminals
- Arm (Backhoe):  
—**3900 mm** 12'10" arm assembly
- Arm (Loading shovel):  
—**4450 mm** 14'7" arm assembly
- Boom (Backhoe):  
—**8700 mm** 28'7" boom assembly
- Boom (Loading shovel):  
—**5950 mm** 19'6" boom assembly
- LED lamp system
- Rearview monitor system
- Cab front guard
- Preventive Maintenance (PM) tune-up service connection

- Track shoe, **1010 mm** 40" triple grouser
- Center frame under cover
- Grease refill system
- Service center (Grease shut-off valve available to order)
- Isolators, battery and starter
- Jump start receptacle
- Satellite communication system for KOMTRAX Plus (Orbcomm)
- Heavy-duty rock bucket
- 55°C spec.
- Additional filter system for poor-quality fuel
- Additional pre-cleaner for engine air filter (Engineaire)
- Full length track guiding guards
- Ground refueling system

