

KDPF REGENERATION OPERATOR TIPS

This Cab Card is not a substitute for the Operation and Maintenance Manual. Always read the Operation and Maintenance Manual thoroughly and make sure that you understand the content.

Types of Regeneration

Passive

- » Invisible to the operator
- » Always occurring
- » Exhaust temperatures are normal

Active

- » Automatically started
- » No effect on operation
- » Exhaust temperatures may be **HIGH**

Manual Stationary

- » Manually started by operator after machine prompt
- » Machine must be in the **correct idling position**
- » Exhaust temperatures may be **VERY HIGH**

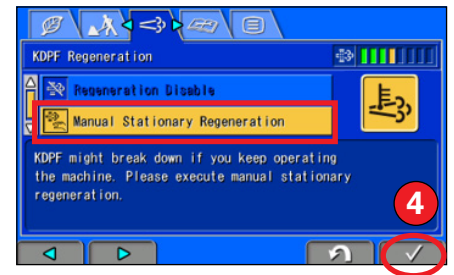
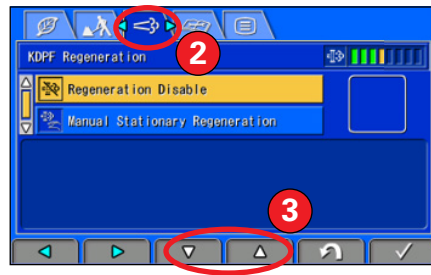
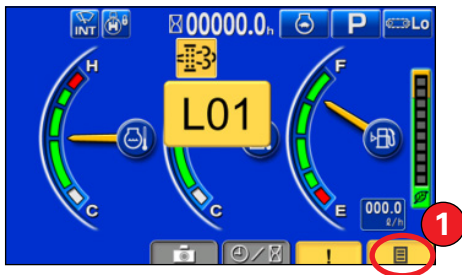
Icon	Description	Icon	Description
	An aftertreatment devices regeneration is in progress		Regeneration is disabled (only applies to regeneration that cause exhaust temperatures to increase)
	A manual stationary regeneration is requested		A manual stationary regeneration is REQUIRED
	Run a manual stationary regeneration		The aftertreatment system is damaged, regeneration is no longer available.

Running a Manual Stationary Regeneration

If a manual stationary regeneration is requested; **FINISH** your work, **MOVE** the machine to a safe location, and **PARK** it in the correct idling position.

*Excavator monitor shown.

- 1 Press the **menu button**
- 2 Keep pressing the **menu button** or use the **arrows** until the **KDPF Regeneration** screen is shown
- 3 Use the **arrows** until the **2nd option – Manual Stationary Regeneration** – is highlighted
- 4 Press to start the regeneration. Allow the machine to complete the regeneration before doing anything else.



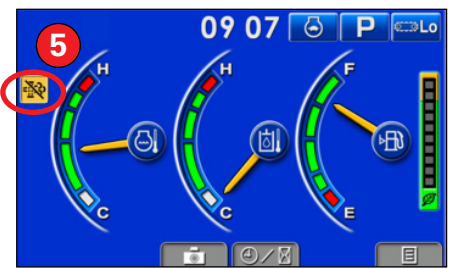
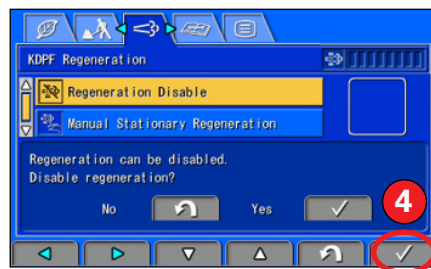
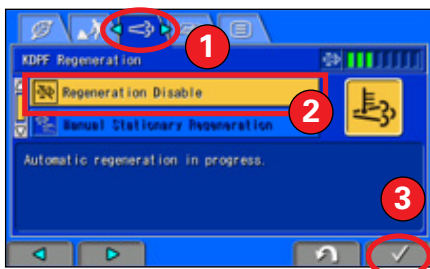
Shutting OFF the Engine

DO NOT STOP THE ENGINE ABRUPTLY EXCEPT IN THE CASE OF AN EMERGENCY

To stop the engine first **check** the monitor to see if the regeneration symbol is **ON**. If the regeneration symbol is ON, the regeneration needs to be disabled before the engine is shut down.



- 1 Get to the **KDPF Regeneration** screen
- 2 Use the **arrows** until the **1st option – Regeneration Disable** – is highlighted
- 3 Press to disable
- 4 Press again to confirm the disable
- 5 Return to the standard screen and you will see the **Regeneration Disable Pilot Lamp ON**. **Idle** the engine for **5 minutes** to cool it down, and then turn the engine **OFF**.



0800 566 2878 | komatsu.co.nz

KOMATSU
Driven by your success

KDPF REGENERATION OPERATOR TIPS

This Cab Card is not a substitute for the Operation and Maintenance Manual. Always read the Operation and Maintenance Manual thoroughly and make sure that you understand the content.

ALWAYS ENSURE THE MACHINE IS IN THE CORRECT IDLE POSITION WHEN IDLING FOR LONG PERIODS



Excavators

- 1 Work equipment → **GROUND**
- 2 Throttle dial → **MIN** position
- 3 Safety lock lever → **LOCK** position

- 1 Work equipment → **GROUND**
- 2 Throttle dial → **MIN** position
- 3 Travel lock lever → **LOCK** position
- 4 Work Equipment lock lever → **LOCK** position



Bulldozers



Wheel Loaders



Dump Trucks



Motor Graders

- 1 Work equipment → **GROUND/LOWER**
- 2 Gear shift lever → **NEUTRAL**
- 3 Park brake → **ON**
- 4 Accelerator → **IDLING**

DO NOT ISOLATE THE BATTERY WHILE THE SYSTEM OPERATING LAMP (AMBER OR GREEN LIGHT) IS ON

System Operating Lamp ON

After engine off, the machine's main power supply is still on while the ECU is terminating the system safely. Once the power supply has shut down the lamp will go OFF. This will take:

Tier 4 Interim: Up to 2 minutes

Tier 4 Final: Up to 7 minutes

DO NOT ISOLATE THE BATTERY

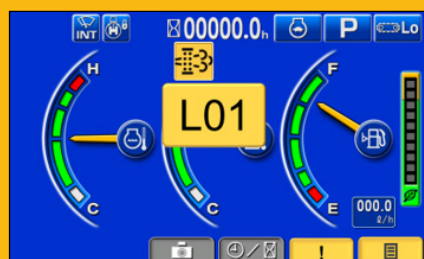


System Operating Lamp OFF

The machine is **READY** to isolate.



REGENERATION ACTION LEVELS



Manual Stationary Regeneration Request

- » Complete current work
- » Move machine to a safe place
- » Place in correct idle position
- » Perform manual stationary regeneration



Manual Stationary Regeneration Required

- » **Stop** current work
- » Move machine to a safe place
- » Place in correct idle position
- » Perform manual stationary regeneration



KDPF system damage - manual stationary regeneration is disabled

- » Stop the engine **IMMEDIATELY**
- » Contact your Komatsu distributor for assistance and service



View Demonstration

Form No: NZZESB099928_MARCH2020



0800 566 2878 | komatsu.co.nz

KOMATSU

Driven by your success