

KOMATSU GENUINE PARTS

Ecowhite Element

Hydraulic Element



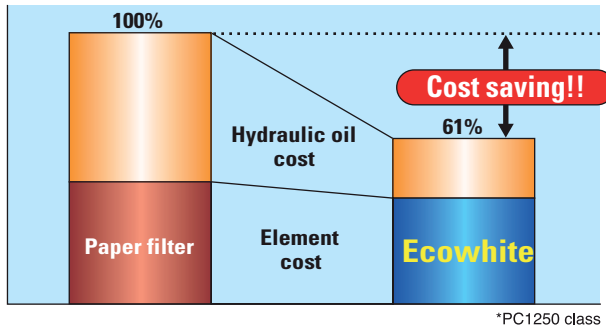
Long service life and excellent filtration ability

KOMATSU

Adoption of highly accurate fiberglass improves It will decrease the wear of your

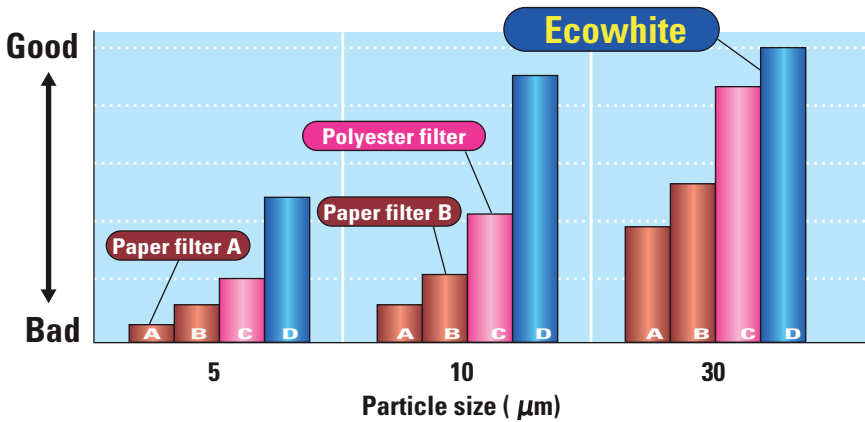
Highly efficient Ecowhite hydraulic element contributes to the reduction of maintenance costs.

Comparison of maintenance cost for large-sized* hydraulic excavators for 5000 hours (only for element and oil)



Use of the Synthetic Filter made of ultra fine fiberglass results in a substantial rise in filtration efficiency of dust in the oil and of abrasion powder. Wear and damage to the hydraulic equipment are prevented.

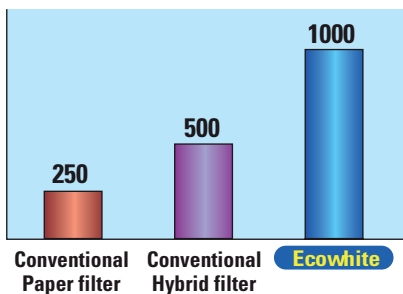
Comparison of filtration capabilities with filters from other manufacturers



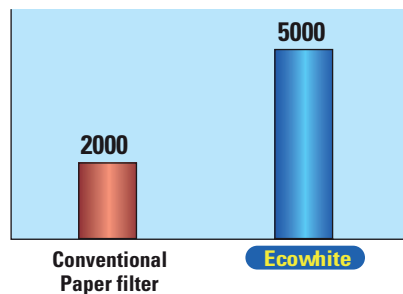
Substantial improvement of ability to capture dust. Lengthen of interval for element replacement and of the interval for exchange of hydraulic oil.

By using a special fiberglass Synthetic Filter, the Ecowhite substantially raises the amount of dust captured in the oil. Compared to paper filters, the interval for element replacement is lengthened 4 times, and the interval for exchange of hydraulic oil is extended in 2.5 times. *In this corporation hydraulic excavator

Replacement interval of element (hrs)



Replacement interval of Hydraulic oil (hrs)



ECOWH Elen

Improves filtration ability and extends service life. Our machine's hydraulic system.



White element

The tough fiberglass Synthetic Filter of Ecowhite shows a stable filtration capability that is not affected by hydraulic fluctuation or by high backpressure.

Fabrication integrity (Leak test comparison)

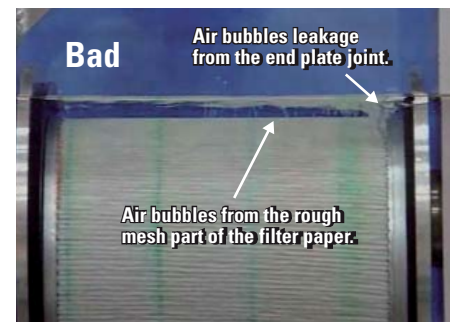
Air pressure is applied inside the element filled up with alcohol solution, and the conditions of the filtering paper itself, as well as the degree of adhesion between the filtering paper and the end plate, are tested using the air bubbles discharged from the element.

Ecowhite



Minute air bubbles released from the surface of the filter paper.

Product from other company

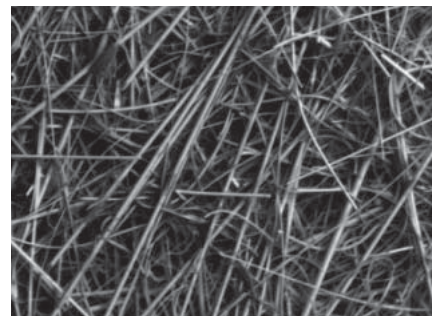


Relatively large air bubbles released from the rough mesh part of the filter paper.

Comparison of dirt capturing method between paper filter and Ecowhite fiber glass filter

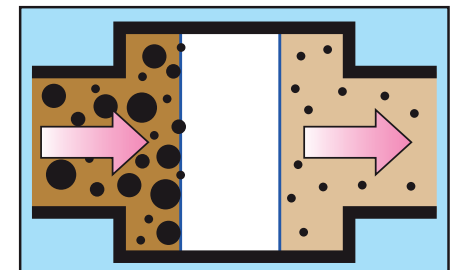
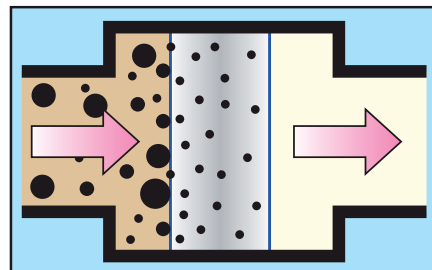
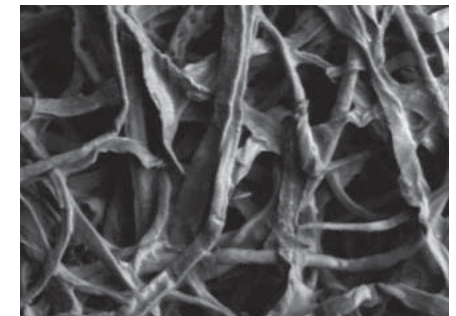
Ecowhite fiber glass filter

Dirt is not only captured on the surface of the filter but also in the inner parts of the fiber. This prevents dirt from contaminating the oil and provides longer life in a more compact size.



Paper filter

Since there are both large and fine dirt particles in the oil, the paper filter does not always capture the smaller ones.



Example of hydraulic excavator with Ecowhite

	Machine Model	Parts No.	Qty / unit	Element exchange interval	Hydraulic oil exchange interval
Small size excavators	PC78US-8	21W-60-41121	1PC	Every 1000hrs	Every 5000hrs
Middle size excavators	PC130-8	14X-60-31150	1PC	Every 1000hrs	Every 5000hrs
	PC200-7,8 PC300-7,8	207-60-71182	1PC	Every 1000hrs	Every 5000hrs
	PC400-7,8	208-60-71123	1PC	Every 1000hrs	Every 5000hrs
Large size excavators	PC600-7,8	209-60-77532	1PC	Every 1000hrs	Every 5000hrs
	PC750-7 PC800-7,8 PC1250-8		2PCS		
	PC2000-8		3PCS		

For parts numbers, please be sure to refer to the operation and maintenance manual or to the parts book.

Products with highly efficient Ecowhite element

Fuel charge pump - Battery power source 24V DC



Fuel with a large amount of contaminants has been removed by Ecowhite element is supplied to the machine on-site.

Characteristics

- Light weight and compact, easy to carry
- Easily available filter identical to PC200

Part Number

(Number may vary according to the region. Please verify at the KOMATSU distributor.)

79A-110-1100

FOR MORE INFORMATION:

Australia - Ph: 1300 566 287 | Web: www.komatsu.com.au

New Zealand - Ph: 0800 566 2878 | Web: www.komatsu.co.nz

New Caledonia - Ph: 24 25 10

KOMATSU

Materials and specifications are subject to change without notice.
KOMATSU is a trademark of komatsu Ltd, Japan.

Form No. ZESB029000